

FALMOUTH HIGH SCHOOL
 74 Woodville Road, Falmouth, Maine 04105
 Tel (207) 781-7429 Fax (207) 781-7443
www.falmouthschools.org

2004-2005 SCHOOL PROFILE

Principal: Mrs. Allyn W. Hutton
Asst. Principal: Mr. Brian Mazjanis

Counselors: Mrs. Shaye L. Paradis Mrs. Kristin A. Hurley
Ms. Valerie J. Webster Mr. Gary L. Canter

THE SCHOOL

Falmouth High School is a comprehensive high school with an enrollment of approximately 600 students in grades 9 through 12. Falmouth offers a rigorous academic program and a wide range of athletic and extracurricular activities. In addition to a full array of challenging college-preparatory and honors-level courses, Advanced Placement and college-level courses are offered in English, math, social studies, science and world languages. The Class of 2005 has had the following AP courses available: English literature, psychology, government, European history, US history, calculus, statistics, and chemistry. (In the current school year, government is not offered.) Additional advanced courses include: anatomy and physiology, Syracuse University Project Advance English (senior year), French V, and Spanish V.

THE COMMUNITY

Falmouth is a seacoast community on Casco Bay most of whose residents earn their living in nearby Portland, Maine's largest city. It is a community of well-educated professionals who maintain very high expectations of their students, teachers and schools.

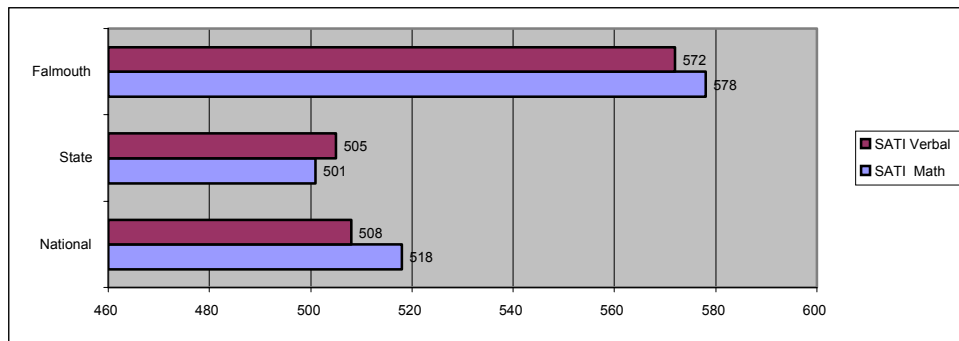
POST SECONDARY PLANS – CLASS OF 2004

4-Year Colleges 79% 2-Year Colleges 7% Gap /Post-Grad 4% Work 9% Military 2%

ACCREDITATION

The New England Association of Schools and Colleges; the Maine Department of Education

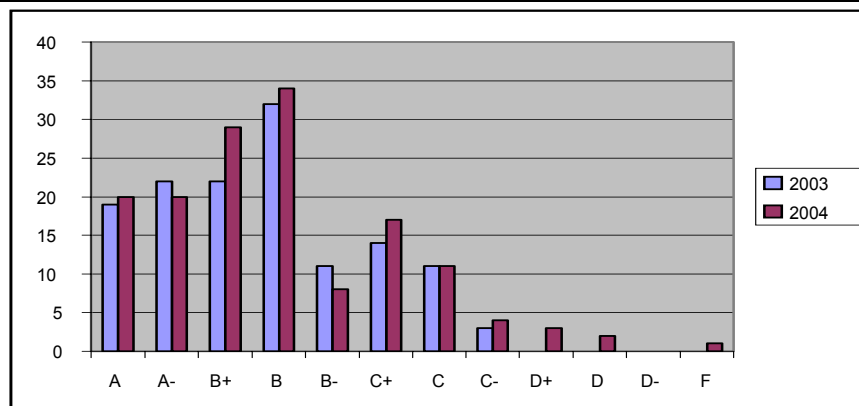
CLASS OF 2004 SAT SCORE COMPARISON



GRADE POINT AVERAGE

Determined by averaging grades for all subjects for which a full credit is awarded for a full year or a half credit for a semester. Special weight is given to the Honors and AP courses. The highest weighted average is 104.

CLASS 2004 AND 2003 GRADE POINT AVERAGE COMPARISON



Falmouth High School does not report rank in class for its students.

GRADING

A: 93-100 B: 85-92 C: 77-84 D: 70-76 F: Below 70